

SERVICE BULLETIN

No. 103

Proper Tire Stud Identification Passenger and Light Truck Mud & Snow Tires

Due to questions regarding proper tire stud sizing and changes in tire stud identification, the current designation found in our product manuals is given with cross reference information in Table 1 to ensure that proper tire studs are being installed in studable tires. Both the TSMI # and the European nomenclature should appear on the labels of most tire stud boxes. The tire stud in Figure 1 depicts the locations of the two measurements given in Table 1. Dimension A is the base width of the stud. Dimension B is the overall length from the bottom of the base to the tip of the stud.

The use of the proper stud size outlined in Table 1 below should provide maximum stud retention and studded tire performance if installed properly as shown in Figure 2. Only the stud tip should protrude 1/32" to 2/32" above the tread surface when inserted perpendicular to the stud hole in the tire. For information on proper tire stud installation, please refer to service bulletin #96 dated August 8, 1997.

Figure 1.

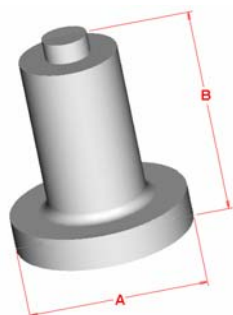


Figure 2.

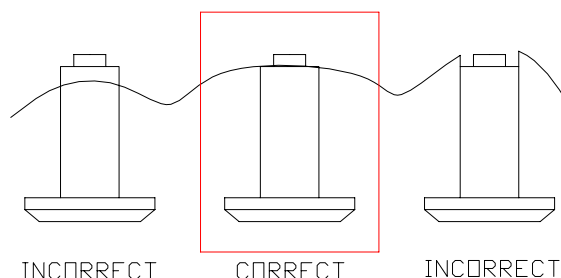


Table 1.

| Product Manual | TSMI # | European # | Dimension A (mm) | Dimension B (mm) |
|----------------|--------|------------|------------------|------------------|
| 12X415 | 12 | 9-11 | 9 | 11 |
| 13X470 | 13 | 9-12 | 9 | 12 |
| 15X520 | 15 | 9-13 | 9 | 13 |
| 16X585 | 16 | 9-15 | 9 | 15 |
| 17X615 | 17 | 9-16 | 9 | 16 |

Always follow all safety instructions and equipment operating directions provided by the manufacturers of the studs and stud-installation equipment.

You can order additional copies of this Service Bulletin through the Consumer Relations Department, Cooper Tire & Rubber Company, Findlay, Ohio 45840 or call 1-800-854-6288. If you wholesale tires to other dealers (sub-dealers), **each** should receive a copy of this Service Bulletin.

CONSUMER RELATIONS

COOPER TIRE